

SENTRY GS (EFV)

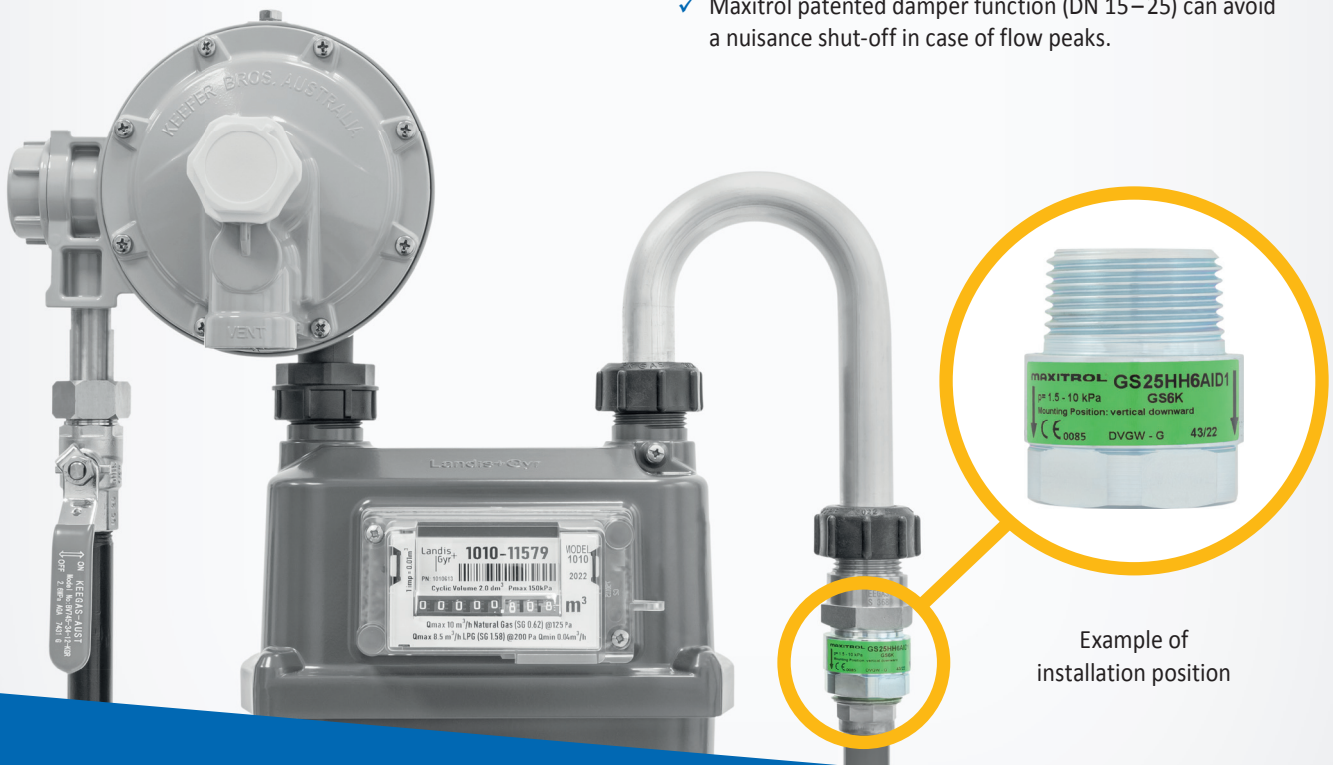
SENTRY GS excess flow valves (EFV) for residential installation shut off the gas flow when a predefined closing flow rate is reached. Maxitrol's factory adjustment (100%) provides a precise and reliable closing flow rate. In nominal flow range, the EFV remains in a stable, open position.

The SENTRY EFV is installed downstream of the main gas manual shut-off valve and the regulator. SENTRY GS EFVs with bypass orifice reopen automatically after the downstream line has been repaired and re-pressurized.

**NEW
AMENDMENT
TO AS/NZS5601.1
(CLAUSE 5.2.11)**

MAXITROL® SENTRY GS EFV for Residential Installations:

- ✓ Complies with the new AS/NZS5601.1 (Clause 5.2.11) Installation Codes (mandatory March 31, 2023)
- ✓ The pressure drop through the valve is ≤ 0.5 mbar (50 Pa) @ nominal flow
- ✓ Tested operating pressure range -(AU/NZ 1.25–10 kPa,)
- ✓ SENTRY GS "Z" model is for horizontal and upward flow direction
- ✓ SENTRY GS "D" model is for downward flow direction only
- ✓ Threaded connections comply with EN 10226-1 (ISO 7-1) from 1/2" to 2" (DN 15–50)
- ✓ BS 746 connections available
- ✓ Nominal flows from 1.6 m³/h natural gas to 16 m³/h
- ✓ Closing factor of type "K" is between 1.3 and 1.45. The trip flow is 30–45% above nominal flow. (In Germany only this type of EFV can be used with composite pipe or PEX pipe. It is the type "K" per definition in the standard DIN 30652-1.)
- ✓ Maxitrol patented damper function (DN 15–25) can avoid a nuisance shut-off in case of flow peaks.



Example of installation position



KEEFER BROS
(AUST) PTY LTD

134 Malcolm Road, Braeside. Vic. 3195

p: 03 9580 4777

e: sales@keeferbros.com.au | www.keeferbros.com.au